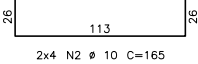
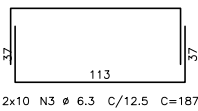
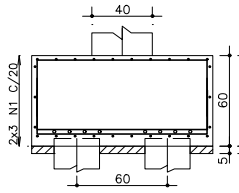
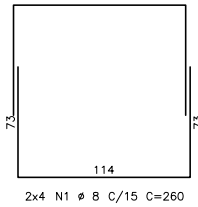
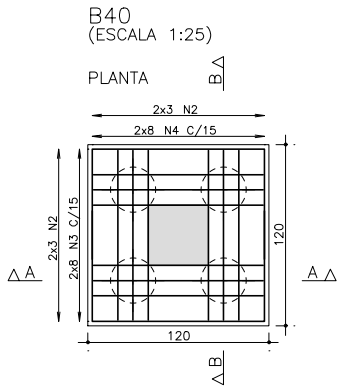
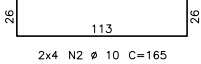
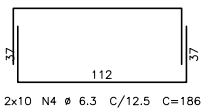
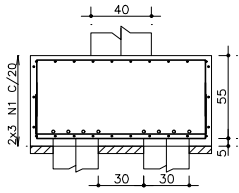


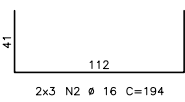
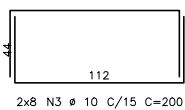
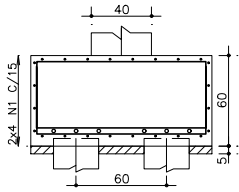
CORTE A - A



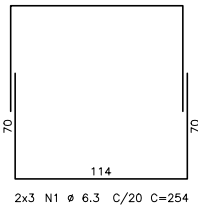
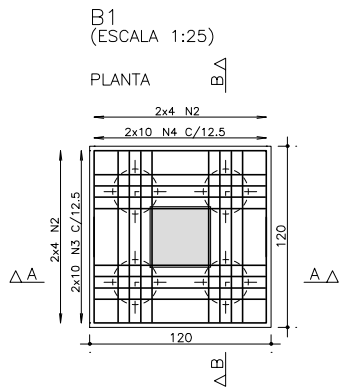
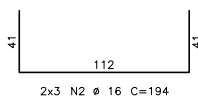
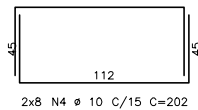
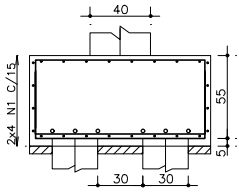
CORTE B - B



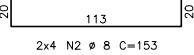
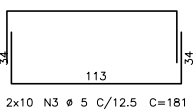
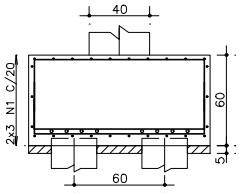
CORTE A - A



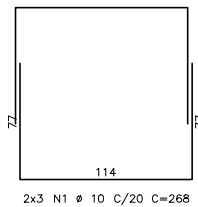
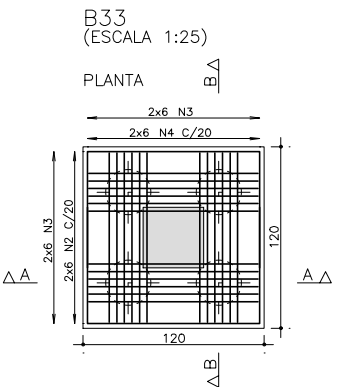
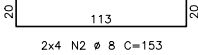
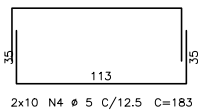
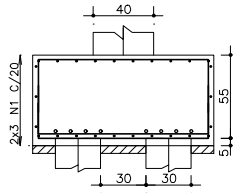
CORTE B - B



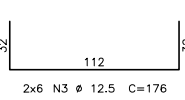
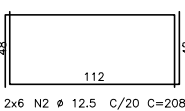
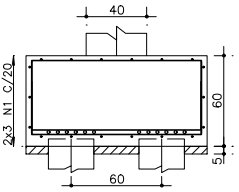
CORTE A - A



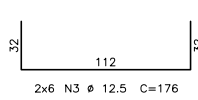
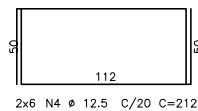
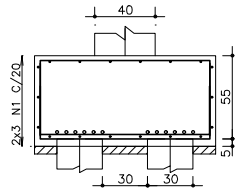
CORTE B - B



CORTE A - A




CORTE B - B



	AÇO	POS	BIT (mm)	QUANT	COMPRIMENTO	
					UNIT (cm)	TOTAL (cm)
B1	50A	1	6.3	6	254	1524
	50A	2	8	16	153	2448
	60B	3	5	20	181	3620
	60B	4	5	20	183	3660
B33	50A	1	10	6	268	1608
	50A	2	12.5	12	208	2496
	50A	3	12.5	24	176	4224
	50A	4	12.5	12	212	2544
B39	50A	1	6.3	6	254	1524
	50A	2	10	16	165	2640
	50A	3	6.3	20	187	3740
	50A	4	6.3	20	186	3720
B40	50A	1	8	8	260	2080
	50A	2	16	12	194	2328
	50A	3	10	16	200	3200
	50A	4	10	16	202	3232

RESUMO AÇO CA 50-60				
AÇO	BIT (mm)	COMPR (m)	PESO (kg)	
60B	5	73	11	
50A	6.3	105	26	
50A	8	45	18	
50A	10	107	66	
50A	12.5	93	89	
50A	16	23	37	
Peso Total	60B =		11	kq
Peso Total	50A =		235	kq

fck 250. kg/cm2 - C25

 Schuring & Schuring		Schuring & Schuring Ltda. Escritório Técnico B.E.SCHURING - Projetos de Engenharia Av. XV de Novembro, 489 - Porto 2o. Andar - Cuiabá MT Fone:(065) 321 9959 - Fax:(065) 623 5066 - Email - schuring@terra.com.br	
PROJETO:	PROPRIETÁRIO:	PREFEITURA MUNICIPAL VARZEA GRANDE	
		PROJETO ORLA DO PORTO ALAMEDA JULIO MULLER	
RESP. TEC. EXECUÇÃO:	OBRA:	CENTRO CULTURAL	
		END.: Alameda Julio Muller, s/n Bairro Alameda / Varzea Grande - MT	
AUTORES DO PROJETO:	ASSUNTO:	FUNDAÇÃO DET ARM BLOCOS	
		PECAS DETALHADAS B1 / B33 / B39 / B40	
Benedito Eliseu Schuring Eng.Civil- CREA 715/D-MT		FOI: 250	DIRETORES AUTORIZADOS VERIFICAR MEDIDAS NA OBRA
Andre Luiz Schuring Eng.Civil- CREA 8697/D-MT		ESCALA: 1:50	DATA: 13/08/2018
		ARQUIVO:	FOLHA No. 03